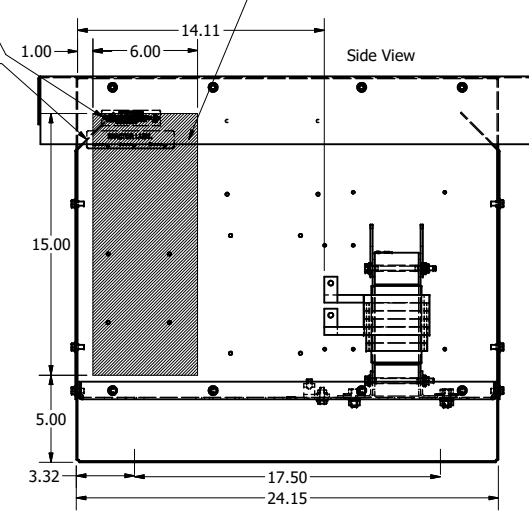
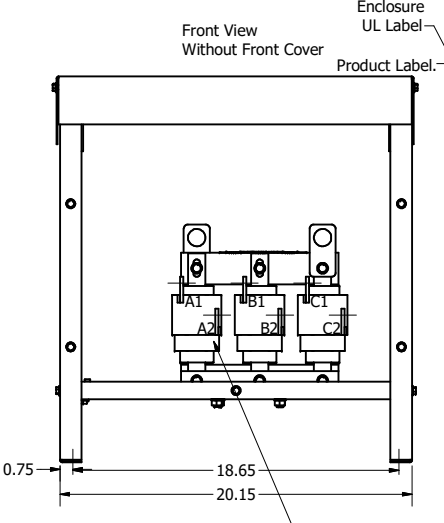
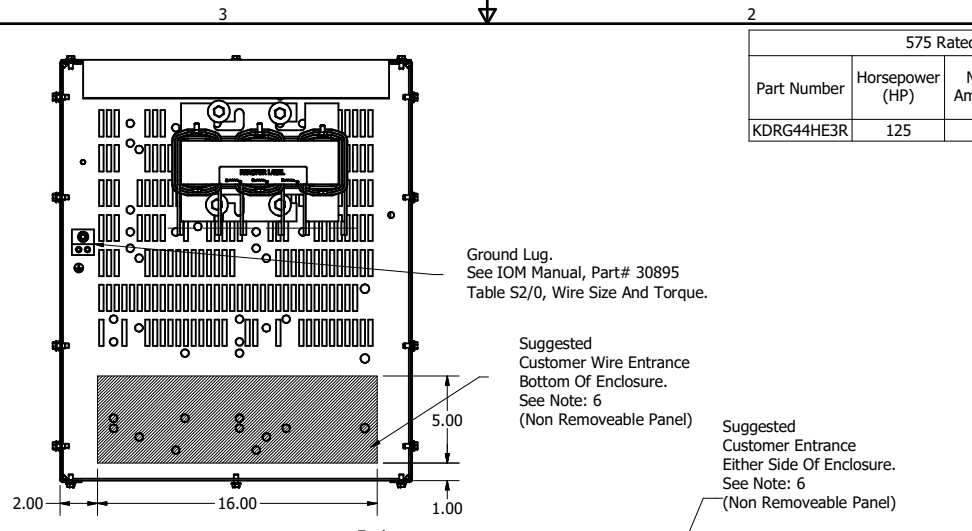
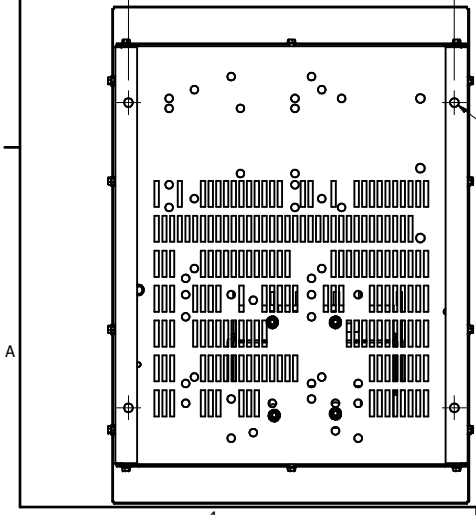
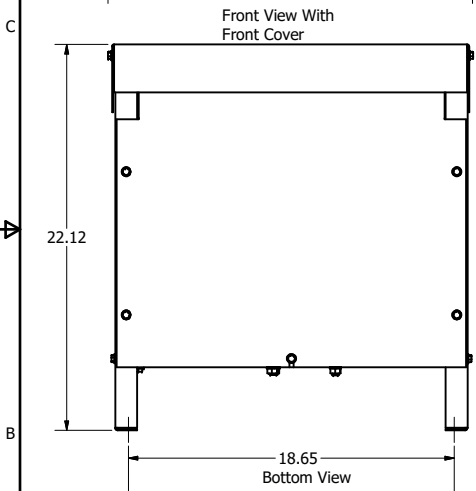
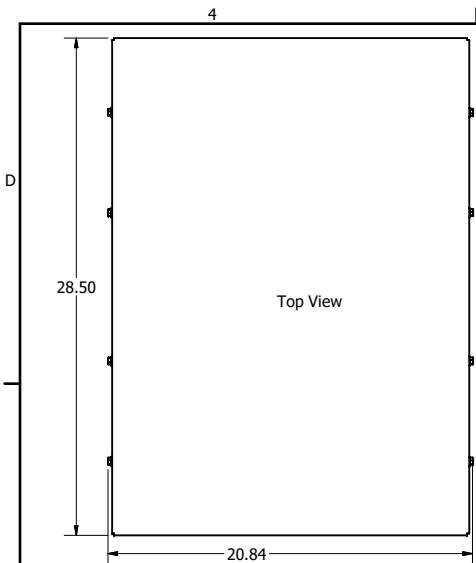


575 Rated Voltage, 600 Max Voltage, High Z, Impedance.									
Part Number	Horsepower (HP)	Motor Amps (A)	Maximum Amps (A)	Inductance (uH)	Weight (LBS)	Available Lug Kit	Losses (W)	Terminal Hole Size (Inches)	
KDRG44HE3R	125	125	130	371	130	SLK10	381	0.28	



**TCI** (800) 824-8282 transcoll.com

TCL, LLC  
Germanstown, WJ. USA  
transcoll.com  
800-824-8282

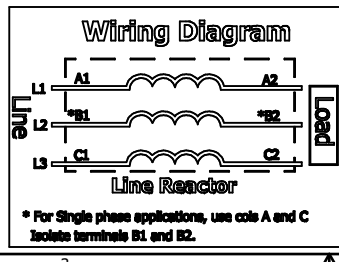
KDR/L Drive Reactor  
KDR - Motor Amps ---  
3PH, 50/60Hz, ---V Rated, 600V Max, -A Max  
40C Amb Max, 155C Max, RoHS  
Manual #30895 LUG KIT #SLK---

UL LISTED  
100-Cont. Ins. 1000

CE

DATE CODE A1 B1 C1

- Notes:
1. KDR Lug Kits sold separately. Contact TCI.
  2. UL file number: cULus Listed File E116124.
  3. KDR Drive Reactors Comply With The Thermal and Altitude Standards Set Forth by NEMA ST20-1992.
  4. KDR IOM Manual Part Number 30895
  5. Material(s) Shall be RoHS Compliant
  6. Customer Is Responsible For Installation To Meet All National And Local Electrical Codes.



THE INFORMATION AND DESIGNS CONTAINED IN THIS DRAWING ARE CONFIDENTIAL AND THE PROPRIETARY PROPERTY OF ALLIED MOTION TECHNOLOGIES INC. AND ITS SUBSIDIARIES. NEITHER THIS DESIGN NOR ANY INFORMATION CONTAINED IN THIS DRAWING MAY BE REPRODUCED OR DISCLOSED TO OTHERS WITHOUT THE EXPRESS WRITTEN CONSENT OF ALLIED MOTION TECHNOLOGIES INC. AND ITS SUBSIDIARIES.				TOLERANCES (EXCEPT AS NOTED)		W132N10611 (Rev 1) Feb 2023 An Official Motion Group Company KDR G Frame, Copper Bus, Enclosed Type 3R, Inductor Drawing	
C	6575, Update Terminal to Flag	3/8/2024	DSW	DECIMAL	.XX ± .25 .XXX ± .10	DATE	4/24/18
B	6400, Remove KDRG3H	9/1/2023	DSW	FRACTIONAL	± 1/32	SCALE	1/5
A	Combined Drawing	4/24/18	DSW	ANGULAR	± 1°	DRW NO	107618-1DG
NO	REVISION	DATE	BY			SIZE	SHT 1 OF 1